

## Records of Two Pachyrhynchini Weevils (Coleoptera, Curculionidae, Entiminae) from Karakelong Is., Talaud Islands, Indonesia

Hiraku YOSHITAKE<sup>1)</sup>, Akiko SAITO<sup>2)</sup> and Rudi HARTONO<sup>3)</sup>

<sup>1)</sup> Institute for Agro-Environmental Sciences, NARO,  
3–1–3 Kannondai, Tsukuba, Ibaraki, 305–8604 Japan

<sup>2)</sup> Natural History Museum and Institute, Chiba,  
955–2 Aoba-chô, Chuô-ku, Chiba, 260–8682 Japan

<sup>3)</sup> Taman Wisata Bantimurung,  
Maros 90561, Makassar, South Sulawesi, Indonesia

Our knowledge on weevil fauna of the Talaud Islands, North Sulawesi Province, Indonesia is still limited due to the lack of sufficient surveys. Up to the present, only one Pachyrhynchini species, *Homalocyrtus intermittens* (HELLER, 1912), has been reported from “Talaud” without detailed locality data. From the end of 2015 to the beginning of 2016, the second and third authors visited Karakelong Is., the largest island in the Talaud Islands, and got a short series of specimens of two Pachyrhynchini weevils. They were identified to species by the first author. In this short report, we record these two species from Karakelong Is. with precise collecting data, in order to improve our knowledge of the Pachyrhynchini fauna. Before going further, we thank Mr. Andi HASRUL for his help during surveying on Karakelong Is.

### 1. *Homalocyrtus intermittens* (HELLER, 1912)

(Figs. 1, 2)

*Metapocyrtus* (*Homalocyrtus*) *intermittens* HELLER, 1912, 375 (in key), 376 (type locality: “Talaud”), pl. 1, figs. 29 & 29 a (male & female elytra). — SCHULTZE, 1922, 594, pl. 4, fig. 16 (male aedeagus). — DALLA TORRE & EMDEN, 1931, 18 (in catalog; “Talaud”).

*Homalocyrtus intermittens*: YAP & GAPUD, 2007, 129 (raised *Homalocyrtus* to a full genus).

*Diagnosis.* See HELLER (1912, 375).

*Specimens examined.* Indonesia: North Sulawesi Province. 2 ♂♂, 1 ♀, Talaud Islands, Karakelong Is., Melonguane Timur, Tule, 1.I.2016, Akiko SAITO leg.

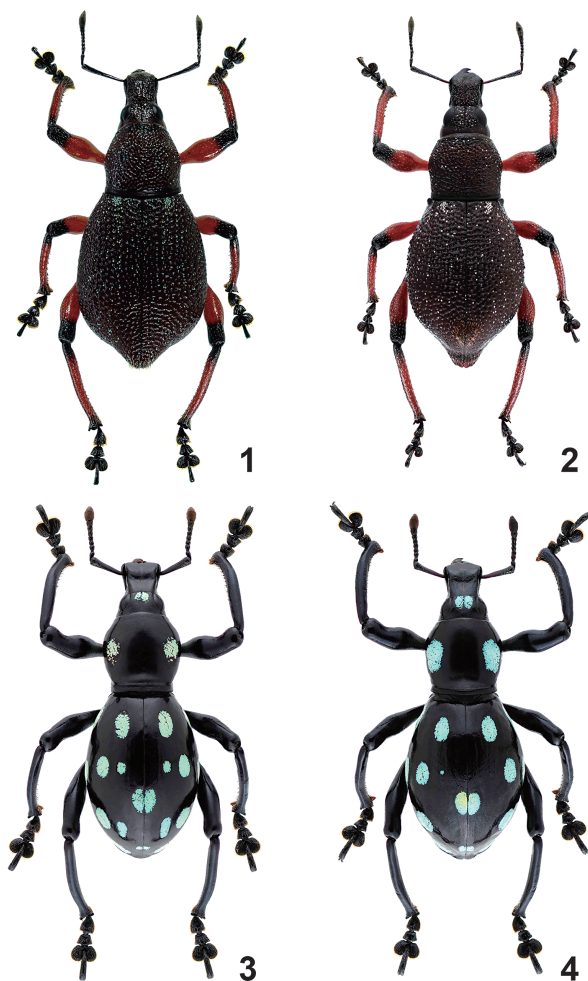
*Distribution.* Indonesia (Talaud Isls.: Karakelong Is.).

*Notes.* The specimens examined were found on leaves of grass plants growing along a road on the south coast of Karakelong Is. Vegetation around the collecting site is a secondary broad-leaved forest mixing with clove plantations.

### 2. *Pachyrhynchus croesus* OBERTHÜR, 1879

(Figs. 3, 4)

*Pachyrhynchus croesus* OBERTHÜR, 1879, 570 (type locality: “iles Sangliir”), pl.1, fig. 2 (dorsal habitus). — BEHRENS, 1887, 217, 236 (in key), 254 (redescription & distribution; “Hab.: Insulae Sanghir.”). — HELLER, 1912, 304 (placed in “Gruppe III”), 307 (in key), pl. 1, fig. 17. — SCHULTZE, 1924, 357 (placed in “Group XV”; in key), 361 (diagnosis; “Moluccas, Sangir Island”), pl. 9, fig. 8. — DALLA TORRE & EMDEN, 1931, 28 (in catalog; “Molukken, Sanghir-Insel”).



Figs. 1–4. Dorsal habitus of Pachyrhynchini spp. from Karakelong Is., Talaud Islands, Indonesia. — 1, *Homalocyrtus intermittens* HELLER, male; 2, ditto, female; 3, *Pachyrhynchus croesus* OBERTHÜR, male; 4, ditto, female.

*Diagnosis.* See SCHULTZE (1924: 361).

*Specimens examined.* Indonesia: North Sulawesi Province. 2 ♂♂, 4 ♀♀, Talaud Isls., Karakelong Is., Melonguane Timur, Tule, 30.XII.2015, Akiko SAITO leg.

*Distribution.* Indonesia: North Sulawesi Province (Sangir Isls.: Sangir Is.; Talaud Isls.: Karakelong Is.).

*Notes.* SCHULTZE (1924) and DALLA TORRE and EMDEN (1931) noted the range of this species by mistake as “Moluccas, Sangir Island”, but in fact Sangir Is. is a main island of the Sangir Isls. The specimens examined were collected in a sunny secondary broad-leaved forest, which is located in an area lower than 100 m above the sea level and mingled with clove plantations. They were found on the bark of the lower part of a living tree, as well as on leaves of grass plants.

### References

- BEHRENS, W., 1887. Materialien zu einer Monographie der Curculionengruppe Pachyrhynchidae. *Entomologische Zeitung*, **48**: 211–257.
- DALLA TORRE, K. W., M. van EMDEN & F. van EMDEN, 1931. Curculionidae: Brachyderinae: Pachyrhynchini. In SCHENKLING, S. (ed.), *Coleopterorum Catalogus*, (119). Pp. 1–44. W. JUNK, Berlin.
- HELLER, K. M., 1912. Philippinische Rüsselkäfer. (SCHLUSS.) *Philippine Journal of Science* (D), **7**: 347–403, 2 pls.
- OBERTHÜR, R. 1879. Notes sur quelques Coléoptères récoltés aux îles Sanghir par les chasseurs de M. A. A. BRUIJN et description de trois espèces nouvelles. *Annali del Museo civico di storia naturale di Genova*, **14**: 566–572, 1 pl.
- SCHULTZE, W., 1922. X. Beitrag zur Coleopteren Fauna der Philippinen. *Philippine Journal of Science*, **21**: 569–596, 4 pls.
- SCHULTZE, W., 1924. A monograph of the pachyrhynchid group of the Brachyderinae, Curculionidae: Part I. The genus *Pachyrhynchus* GERMAR. (Concluded.) *Philippine Journal of Science*, **24**: 309–366, 3 pls.
- YAP, S. A., & V. P. GAPUD, 2007. Taxonomic review of the genus *Metapocyrtus* HELLER (Coleoptera: Curculionidae: Entiminae). *Philippine Entomologist*, **21**: 115–135.

Manuscript received 14 September 2016;  
revised and accepted 24 October 2016.